



# Misty Mountain Sweater



## Pattern Specifications

Skill Level:

Advanced

Sizes:

Size	XS	S	M	L	XL
To fit bust	80cm	100cm	124cm	144cm	160cm
	31.5"	39.5"	47.25"	55"	63"
Finished sweater bust	83.5cm	104.5cm	125.5cm	146cm	167cm
	32.75"	41"	49.25"	57.5"	65.75"

## Materials

### Yarn

Size	XS	S	M	L	XL
Meters	565m	720m	935m	1145m	1510m
Yards	678yds	864yds	1126yds	1374yds	1652yds
Grams	67g	85g	110g	135g	178g
Skeins	2	2	3	3	4

Sample shown here (size XS) used Penny Lane Yarns “Kidsilk Lane” Lace weight, 72% Mohair, 28% Silk 425m / 465yds per 50g, in color “Ain’t no Sunshine”.

### Needles

Circular needle in size needed to obtain gauge, 60cm / 24” and 80cm / 32” in length.

Preferred needles for small circumference knitting (circular or DPN) in size needed to obtain gauge.

Sample was knit on 3.5mm / US 4 needles.

Crochet hook 3.5mm / US 4

### Notions

1 unique stitch marker for BOR

Stitch markers for chart patterns (optional) and side marker

Waste yarn to hold sleeve stitches

Darning needle

Blocking mat and pins (optional)

### Gauge

23 sts and 34 rnds per 10cm / 4”, worked in the round in garter stitch, after blocking

Changes in gauge will result in size differences and affect the amount of yarn needed to complete the project. Please take the time to check your gauge.

### Techniques used

- Long-tail cast-on
- Lace knitting in the round
- Increasing and decreasing
- Crochet bind-off

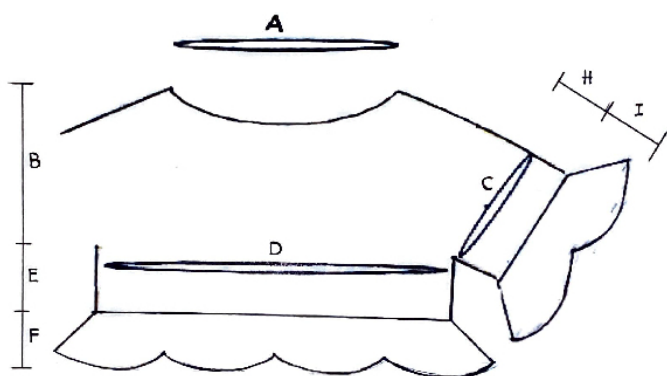
### Abbreviations and Symbols

Please see page 8

### Construction

The sweater is knitted from top to bottom, with a round yoke shaping. After the yoke, the sleeves will be divided from the body and the stitches for them are put on hold. The body is knitted first, in the round in a lace pattern. It ends with a lace hem and is bound off with crochet. Then the stitches of the sleeves are worked in a similar way as the body. The sleeves end with a cuff that matches the hem. Body and sleeve lengths are customizable, just work more or fewer rounds where indicated.

## Sizing and schematic



All measurements in the table are the dimensions of the finished garment. The Sweater is meant to be worn with positive ease in the bust.

Choose a size approx 3.5-10 cm / 1.5-4" larger than your actual bust circumference, depending on the wished positive ease.

*For simpler display, schematic shows one sleeve only.*

Size	XS	S	M	L	XL
A collar circumference	50cm 19.75"	52.5cm 20.75"	53cm 21"	54cm 21.25"	55cm 21.75"
B armhole depth	19cm 7.5"	21cm 8.25"	24cm 9.5"	27cm 10.75"	30cm 11.75"
C upper arm circumference	31.5cm 12.5"		42cm 16.5"		
D Bust circumference	83.5cm 32.75"	104.5cm 41"	125.5cm 49.25"	146cm 57.5"	167cm 65.75"
E lower body length (without hem)	6cm 2.5"				
F Body hem	10cm 4"				
H sleeve (without cuff)	6cm 2.5"				
I Sleeve Cuff	10cm 4"				

## Instructions

### Yoke 1

Cast on the given number of sts using the long-tail cast-on or your favorite cast-on. Place your BOR and join in the round, take care not to twist stitches.

Size	XS	S	M	L	XL
CO	115	120	122	124	126

Work in garter st as per table for your size in Appendix A. *Appendix A can be found on pages 14-18.*

after working as per table for your size, you should have following number of sts on your needles:

Size	XS	S	M	L	XL
st count	324	360	468	504	540

### Yoke 2

Rnds 1-21      Work Rnds 1-21 of Chart 1 / Written instructions 1, repeat as many times around as mentioned in table below for your size.

*Chart 1 can be found on page 9 and Written instructions 1 on page 11.*

Size	XS	S	M	L	XL
Repeats	18	20	26	28	30

### Separate body and sleeves

In Rnd 22 of Chart 1 / Written instructions 1: Place sts for right sleeve on hold using waste yarn, knit sts for front, place sts for left sleeve on hold using waste yarn, knit sts for back.

Size	XS	S	M	L	XL
Right Sleeve	66	60	90	84	78
Front	96	120	144	168	192
Left Sleeve	66	60	90	84	78
Back	96	120	144	168	192
St count of body	192	240	288	336	384

## Body

Work Rnds 1-12, then repeat Rnds 1-6 of Chart 2 / Written instructions 2, repeat it as many times around as mentioned in table below for your size. Here you can adjust length of the body, work st pattern as many times in height as you like, finish after either a round 6 or 12. *Chart 2 can be found on page 9 and Written instructions 2 on page 12.*

Size	XS	S	M	L	XL
Repeats	32	40	48	56	64

## Body Hem

Rnd 1 p all sts

Rnd 2 k all sts

Rnds 3-4 Repeat Rnds 1-2

Rnd 5 p all sts

Rnds 6-33 Work as per Chart 3 / Written instructions 3, repeat as many times around as mentioned in table below for your size. *Chart 3 can be found on page 10 and Written instructions 3 on page 13*

**Note:** Double yarn overs will be worked in the following rnd as follows, p into the first yo, k-tbl into the second yo.

Size	XS	S	M	L	XL
Repeats	8	10	12	14	16

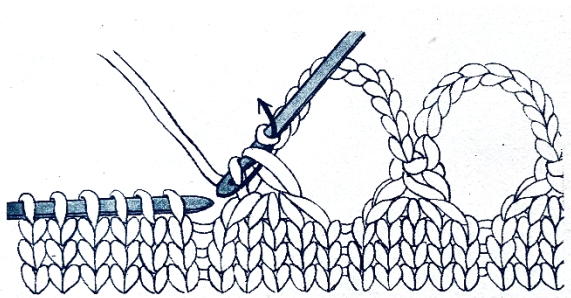
After finishing Chart 3 / Written instructions 3 you will have the following number of sts on your needles

Size	XS	S	M	L	XL
St count	336	420	504	588	672

## Binding off in crochet

Please see instructions and explanation on next page.





Binding of in crochet as follows:

Always join 3 stitches from the sweater with a single crochet stitch and work the number of chain stitches as indicated in Chart 3 in between.

**Exception:** start the round with 2 sts from the sweater joined together and end the round with 4 sts joined together. Break yarn, leaving a tail approx. 20cm / 8" in length for weaving in.

## Sleeves

Both sleeves are worked the same way in lace pattern to the cuff. The cuff is worked in the same lace pattern as body hem. Please see correct number of stitches for your size in table below.

Place the held sts of each sleeve onto your preferred needles for small circumference knitting. Join yarn at the start of the underarm, place BOR in the center of the underarm sts and start working in the round. First work Rd 22 of Chart 1 (k all sts) after work as per Chart 2.

Size	XS	S	M	L	XL
Sleeve sts	66	60	90	84	78

Work Rnds 1-12, then repeat Rnds 1-6 of Chart 2 / Written instructions 2, repeat it as many times around as mentioned in table below for your size. Here you can adjust length of the sleeve, work st pattern as many times in height as you like, finish after either a round 6 or 12. *Chart 2 can be found on page 9 and Written instructions 2 on page 12.*

Size	XS	S	M	L	XL
Repeats	11	10	15	14	13

## Cuff

Rnd 1		p all sts	
Rnd 2		work the increase rnd for your size:	
	XS	K5, (M1, k11) x5, M1, k6	72 sts
	S	K5, (M1, k10) x5, M1, k5	66 sts

	M	K7, (M1, k15) x5, M1, k8	96 sts
	L	K7, (M1, k14) x5, M1, k7	90 sts
	XL	K4, (M1, k9) x3, (M1, k8) x2, (M1, k9) x3, M1, k4	87 sts
Rnd 3		p all sts	
Rnd 4		work as mentioned for your size:	
	XS	k all sts	72 sts
	S	K5, (M1, k11) x5, M1, k6	72 sts
	M	k all sts	96 sts
	L	K7, (M1, k15) x5, M1, k8	96 sts
	XL	K4, (M1, k10) x3, (M1, k9) x2, (M1, k10) x3, M1, k5	96 sts
Rnd 5		p all sts	
Rnd 6-33		Work as per Chart 3 / Written instructions 3, work it as many times around as mentioned in table below for your size. <i>Chart 3 can be found on page 10 and Written instructions 3 on page 13</i>	

Size	XS	S	M	L	XL
Repeats	3	3	4	4	4

Rnd 34	Bind off in crochet the same way as for body hem. Break yarn, leaving a tail approx. 20cm / 8" in length for weaving in.
--------	--

## Finishing

Weave in ends. Soak for 10 min, remove excess water from sweater, block it and let it dry flat.

Use [#mistymountainsweater](#) and [#butzeriadesign](#) and tag me [@butzeria](#) on social media.

I love seeing your progress!

Find me here:

Website <https://www.butzeria.ch/>

Instagram <https://www.instagram.com/butzeria/>

Facebook <https://www.facebook.com/Butzeria/>

Ravelry <https://www.ravelry.com/designers/meret-buetzberger>

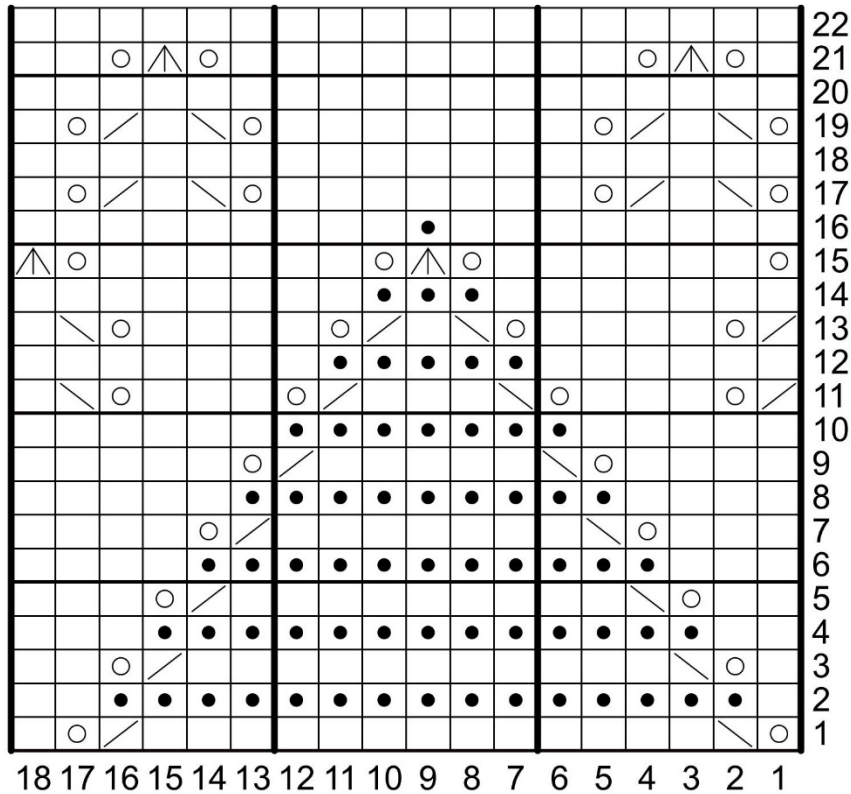


## Abbreviations and Symbols

	approx.	Approximately
	BOR	Beginning of Round marker
	CO	cast on
	incl.	including
	incr.	increase
	k	Knit
	k2tog	Knit two stitches together
	kfb	Knit in front and back
	k-tbl	Knit through back loop
	M1	Make one: From the back, lift the horizontal strand between stitches with the left needle. Knit through the front loop.
	p	Purl
	rnd / rnds	round / rounds
	sl1-k1-ssso	Slip one stitch, knit the next stitch, then pass the slipped stitch over top of the knitted stitch.
	sl1-k2tog-ssso	Slip one stitch, knit the next two stitches together, then pass the slipped stitch over top of the knitted stitches.
	st / sts	stitch / stitches
	yo	Yarn over
		<b>Crochet Bind off:</b>
		Dot – Symbolizes a knitted stitch
	sc3tog	work 3 stitches together in a single crochet stitch
	t-ch2	make 2 chain stitches
	t-ch3	make 3 chain stitches
	t-ch4	make 4 chain stitches
	t-ch5	make 5 chain stitches

## Charts

Chart 1



**\*Remark:** in Rd 15 of Chart 1 and Rd 5 in Chart 2 the round starts and ends a bit different, as the sl1-k1-ssso will be worked at the end of the row but you need the 1<sup>st</sup> st of the beginning of this round.

For Rd 15 of Chart 1 start with:

K1, (yo, k6, yo, sl1-k2tog-ssso) all around and for the last sl1-k2tog-ssso, sl2, remove BOR, sl 2 st back to needle, work sl1-k2tog-ssso, place marker.

For Rd 5 of Chart 2 start with:

K1, (yo, k3, yo, sl1-k2tog-ssso) all around and for the last sl1-k2tog-ssso, sl2, remove BOR, sl2 st back to needle, work sl1-k2tog-ssso, place marker.

Chart 2

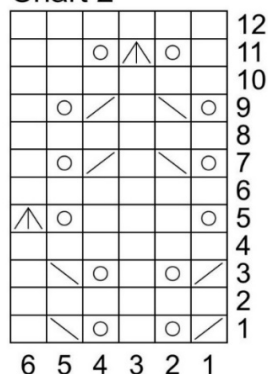
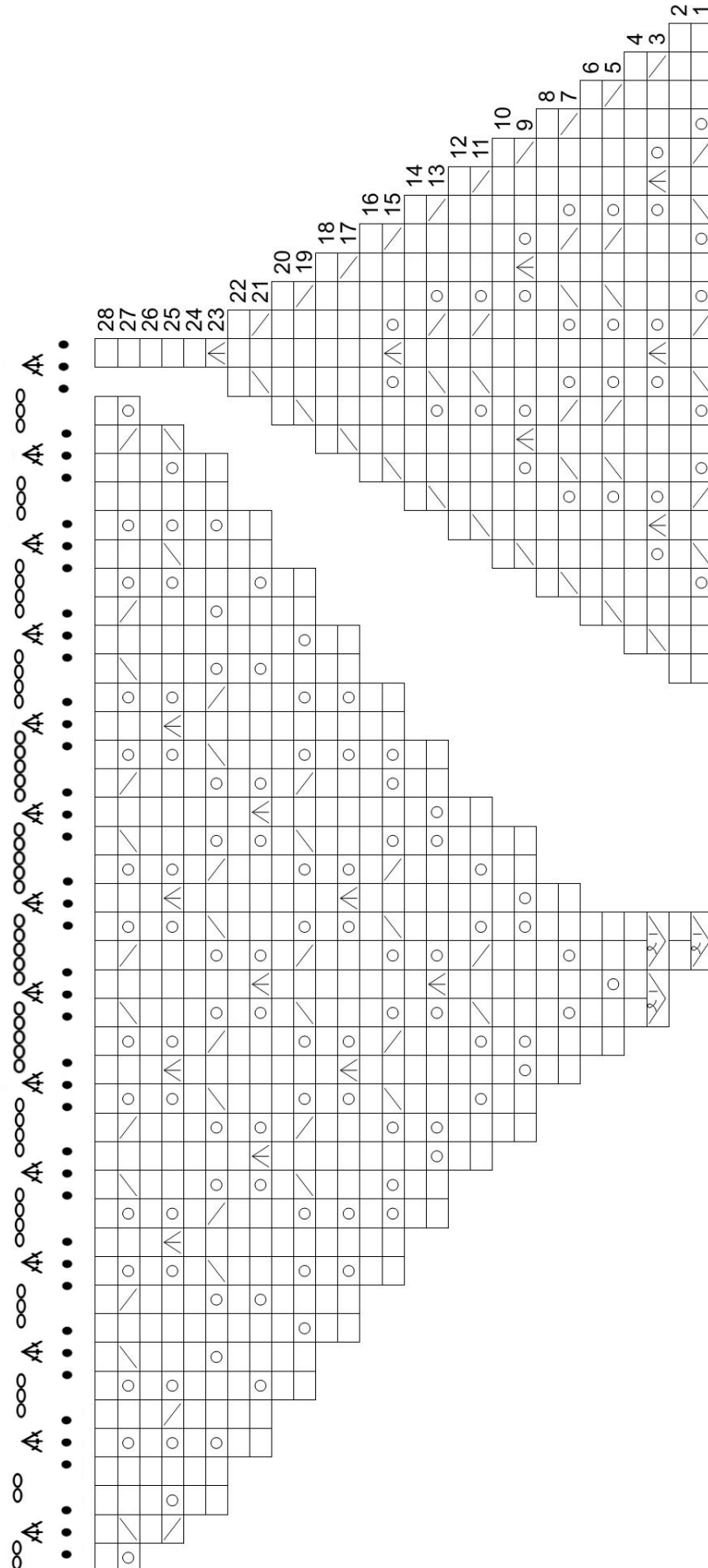


Chart 3



## Written instructions 1

Instructions show one repeat only, work to end of rnd.

Rnd 1	Yo, sl1-k1-psso, k13, k2tog, yo, k1
Rnd 2	K1, p15, k2
Rnd 3	K1, yo, sl1-k1-psso, k11, k2tog, yo, k2
Rnd 4	k2, p13, k3
Rnd 5	k2, yo, sl1-k1-psso, k9, k2tog, yo, k3
Rnd 6	K3, p11, k4
Rnd 7	K3, yo, sl1-k1-psso, k7, k2tog, yo, k4
Rnd 8	K4, p9, k5
Rnd 9	K4, yo, sl1-k1-psso, k5, k2tog, yo, k5
Rnd 10	K5, p7, k6
Rnd 11	K2tog, yo, k3, yo, sl1-k1-psso, k3, k2tog, yo, k3, yo, sl1-k1-psso, k1
Rnd 12	K6, p5, k7
Rnd 13	(k2tog, yo, k4, yo, sl1-k1-psso, k1) x2
Rnd 14	K7, p3, k8
Rnd 15*	(yo, k6, yo, sl1-k2tog-psso) x2
Rnd 16	K8, p1, k9
Rnd 17	Yo, sl1-k1-psso, k1, k2tog, yo, k7, yo, sl1-k1-psso, k1, k2tog, yo, k1
Rnd 18	K18
Rnd 19-20	Repeat Rnds 17-18
Rnd 21	K1, yo, sl1-k2tog-psso, yo, k9, yo, sl1-k2tog-psso, yo, k2

**\*Remark:** here the round starts and ends a bit different, as the sl1-k1-psso will be worked at the end of the round but you need the 1<sup>st</sup> st of the beginning of this round. So start with:

K1, (yo, k6, yo, sl1-k2tog-psso) all around and for the last sl1-k2tog-psso, sl2, remove BOR, sl 2 st back to needle, work sl1-ktog-psso, place marker.

## Written instructions 2

Instructions show one repeat only, work to end of rnd.

Rnd 1	K2tog, yo, k1, yo, sl1-k1-psso, k1
Rnd 2	K6
Rnds 3-4	Repeat Rnds 1-2
Rnd 5*	Yo, k3, yo, sl1-k2tog-psso
Rnd 6	K6
Rnd 7	Yo, sl1-k1-psso, k1, k2tog, yo, k1
Rnds 8-9	Repeat Rnds 6-7
Rnd 10	K6
Rnd 11	K1, yo, sl1-k2tog-psso, yo, k2
Rnd 12	K6

**\*Remark:** here the round starts and ends a bit different, as the sl1-k1-psso will be worked at the end of the round but you need the 1<sup>st</sup> st of the beginning of this round. So start with:

K1, (yo, k3, yo, sl1-k2tog-psso) all around and for the last sl1-k2tog-psso, sl2, remove BOR, sl 2 st back to needle, work sl1-k2tog-psso, place marker.



	Written instructions 3    Instructions shows one repeat only, work to end of rnd	Sts count
Rnd 1	K3, (yo, sl1-k1-ssso, k1, k2tog, yo, k1) x3, k2, kfb	25 sts in repeat
Rnd 2	K25	
Rnd 3	Sl1-k1-ssso, (k2, yo, sl1-k2tog-ssso, yo, k1) x3, k1, k2tog, kfb x2.	25 sts in repeat
Rnd 4	K25	
Rnd 5	Sl1-k1-ssso, k3, (yo, sl1-k1-ssso, k1, k2tog, yo, k1) x2, k2, k2tog, k2, yo, k2	24 sts in repeat
Rnd 6	K24	
Rnd 7	Sl1-k1-ssso, k2, (yo, sl1-k1-ssso, k1, k2tog, yo, k1) x2, k1, k2tog, k2, yo, k1, yo, k2	24 sts in repeat
Rnd 8	K24	
Rnd 9	Sl1-k1-ssso, (k2, yo, sl1-k2tog-ssso, yo, k1) x2, k1, k2tog, (k2, yo x2, k1) x2, k1	26 sts in repeat
Rnd 10	K26	
Rnd 11	Sl1-k1-ssso, k3, yo, sl1-k1-ssso, k1, k2tog, yo, k3, k2tog, k2, yo, k1, yo, sl1-k1-ssso, k1, k2tog, yo, k1, yo, k2	26 sts in repeat
Rnd 12	K26	
Rnd 13	Sl1-k1-ssso, k2, yo, sl1-k1-ssso, k1, k2tog, yo, k2, k2tog, k2, yo x2, k3, yo, sl1-k2tog-ssso, yo, k3, yo x2, k2	28 sts in repeat
Rnd 14	K28	
Rnd 15	Sl1-k1-ssso, k2, yo, sl1-k2tog-ssso, yo, k2, k2tog, k2, yo x2, k1, (yo, sl1-k1-ssso, k1, k2tog, yo, k1) x2, yo x2, k2	30 sts in repeat
Rnd 16	K30	
Rnd 17	Sl1-k1-ssso, k5, k2tog, k2, yo, k1, yo, k3, (yo, sl1-k2tog-ssso, yo, k3) x2, yo, k1, yo, k2	32 sts in repeat
Rnd 18	K32	
Rnd 19	Sl1-k1-ssso, k3, k2tog, k2, (yo, k1) x2, (yo, sl1-k1-ssso, k1, k2tog, yo, k1) x3, yo, k1, yo, k2	34 sts in repeat
Rnd 20	K34	
Rnd 21	Sl1-k1-ssso, k1, k2tog, (k2, yo) x2, k3, (yo, sl1-k2tog-ssso, yo, k3) x3, (yo, k2) x2	36 sts in repeat
Rnd 22	K36	
Rnd 23	Sl1-k2tog-ssso, (k2, yo) x2, k1, (yo, sl1-k1-ssso, k1, k2tog, yo, k1) x4, (yo, k2) x2	38 sts in repeat
Rnd 24	K38	
Rnd 25	K1, k2tog, yo, k1, yo, k2tog, yo, (k3, yo, sl1-k2tog-ssso, yo) x4, k3, yo, sl1-k1-ssso, yo, k1, yo, sl1-k1-ssso	40 sts in repeat
Rnd 26	K40	
Rnd 27	K1, yo, sl1-k1-ssso, k2, yo, k1, (yo, sl1-k1-ssso, k1, k2tog, yo, k1) x5, yo, k2, k2tog, yo	42 sts in repeat
Rnd 28	K42	



## Appendix A

### Yoke 1

Size XS	Work as follows	Sts to incr.	St count
Rnd 1	p all sts		
Rnd 2	k all sts		
Rnd 3	p all sts		
Rnd 4	K2, (M1, k5) x5, (M1, k4) x14, (M1, k5) x6, M1, k2	26	141
Rnds 5-7	Repeat Rnds 1-3		
Rnd 8	K3, (M1, k5) x7, (M1, k6) x10, (M1, k5) x8, M1, k3	26	167
Rnds 9-11	Repeat Rnds 1-3		
Rnd 12	K3, (M1, k7) x5, (M1, k6) x14, (M1, k7) x6, M1, k3	26	193
Rnds 13-15	Repeat Rnds 1-3		
Rnd 16	K4, (M1, k7) x7, (M1, k8) x10, (M1, k7) x8, M1, k4	26	219
Rnds 17-19	Repeat Rnds 1-3		
Rnd 20	K4, (M1, k9) x5, (M1, k8) x14, (M1, k9) x6, M1, k4	26	245
Rnds 21-23	Repeat Rnds 1-3		
Rnd 24	K5, (M1, k9) x7, (M1, k10) x10, (M1, k9) x8, M1, k5	26	271
Rnds 25-27	Repeat Rnds 1-3		
Rnd 28	K5, (M1, k11) x5, (M1, k10) x14, (M1, k11) x6, M1, k5	26	297
Rnds 29-31	Repeat Rnds 1-3		
Rnd 32	K5, (M1, k11) x26, M1, k6	27	324
Rnd 33	p all sts		
<p>Work in garter st until collar measures 13cm / 5.25" measured from cast-on edge.</p> <p>(if you prefer a shorter armhole depth, you can save 2-3cm / 0.75-1.25" here, but keep in mind the total length of your Misty will be shorter as well).</p>			

Size S	Work as follows	Sts to incr.	St count
Rnd 1	p all sts		
Rnd 2	k all sts		
Rnd 3	p all sts		
Rnd 4	K2, (M1, k4) x29, M1, k2	30	150
Rnds 5-7	Repeat Rnds 1-3		
Rnd 8	K2, (M1, k5) x29, M1, k3	30	180
Rnds 9-11	Repeat Rnds 1-3		
Rnd 12	K3, (M1, k6) x29, M1, k3	30	210
Rnds 13-15	Repeat Rnds 1-3		
Rnd 16	K3, (M1, k7) x29, M1, k4	30	240
Rnds 17-19	Repeat Rnds 1-3		
Rnd 20	K4, (M1, k8) x29, M1, k4	30	270
Rnds 21-23	Repeat Rnds 1-3		
Rnd 24	K4, (M1, k9) x29, M1, k5	30	300
Rnds 25-27	Repeat Rnds 1-3		
Rnd 28	K5, (M1, k10) x29, M1, k5	30	330
Rnds 29-31	Repeat Rnds 1-3		
Rnd 32	K5, (M1, k11) x29, M1, k6	30	360
Rnd 33	p all sts		
<p>Work in garter st until collar measures 15cm / 6" measured from cast-on edge.</p> <p>(if you prefer a shorter armhole depth, you can save 2-3cm / 0.75-1.25" here, but keep in mind the total length of your Misty will be shorter as well).</p>			

Size M	Work as follows	Sts to incr.	St count
Rnd 1	p all sts		
Rnd 2	k all sts		
Rnd 3	p all sts		
Rnd 4	K2, (M1, k3) x7, (M1, k4) x19, (M1, k3) x7, M1, k2	34	156
Rnds 5-7	Repeat Rnds 1-3		
Rnd 8	K2, (M1, k5) x10, (M1, k4) x13, (M1, k5) x10, M1, k2	34	190
Rnds 9-11	Repeat Rnd 1-3		
Rnd 12	K3, (M1, k5) x7, (M1, k6) x19, (M1, k5) x7, M1, k3	34	224
Rnd 13-15	Repeat Rnds 1-3		
Rnd 16	K3, (M1, k7) x10, (M1, k6) x13, (M1, k7) x10, M1, k3	34	258
Rnds 17-19	Repeat Rnds 1-3		
Rnd 20	K4, (M1, k7) x7, (M1, k8) x19, (M1, k7) x7, M1, k4	34	292
Rnds 21-23	Repeat Rnds 1-3		
Rnd 24	K4, (M1, k9) x10, (M1, k8) x13, (M1, k9) x10, M1, k4	34	326
Rnds 25-27	Repeat Rnd 1-3		
Rnd 28	K5, (M1, k9) x7, (M1, k10) x19, (M1, k9) x7, M1, k5	34	360
Rnds 29-31	Repeat Rnds 1-3		
Rnd 32	K5, (M1, k11) x10, (M1, k10) x13, (M1, k11) x10, M1, k5	34	394
Rnds 33-35	Repeat Rnds 1-3		
Rnd 36	K6, (M1, k11) x7, (M1, k12) x19, (M1, k11) x7, M1, k6	34	428
Rnds 37-39	Repeat Rnds 1-3		
Rnd 40	K5, (M1, k11) 14x, (M1, k10) x11, (M1, k11) x14, M1, k5	40	468
Rnd 41	p all sts		
<p>Work in garter st until collar measures 18cm / 7" measured from cast-on edge.</p> <p>(if you prefer a shorter armhole depth, you can save 2-3cm / 0.75-1.25" here, but keep in mind the total length of your Misty will be shorter as well).</p>			

Size L	Work as follows	Sts to incr.	St count
Rnd 1	p all sts		
Rnd 2	k all sts		
Rnd 3	p all sts		
Rnd 4	K2, (M1, k3) x14, (M1, k4) x9, (M1, k3) x14, M1, k2	38	162
Rnds 5-7	Repeat Rnds 1-3		
Rnd 8	K2, (M1, k5) x5, (M1, k4) x27, (M1, k5) x5, M1, k2	38	200
Rnds 9-11	Repeat Rnds 1-3		
Rnd 12	K3, (M1, k5) x14, (M1, k6) x9, (M1, k5) x14, M1, k3	38	238
Rnds 13-15	Repeat Rnds 1-3		
Rnd 16	K3, (M1, k7) x5, (M1, k6) x27, (M1, k7) x5, M1, k3	38	276
Rnds 17-19	Repeat Rnds 1-3		
Rnd 20	K4, (M1, k7) x14, (M1, k8) x9, (M1, k7) x14, M1, k4	38	314
Rnds 21-23	Repeat Rnds 1-3		
Rnd 24	K4, (M1, k9) x5, (M1, k8) x27, (M1, k9) x5, M1, k4	38	352
Rnds 25-27	Repeat Rnds 1-3		
Rnd 28	K5, (M1, k9) x14, (M1, k10) x9, (M1, k9) x14, M1, k5	38	390
Rnds 29-31	Repeat Rnds 1-3		
Rnd 32	K5, (M1, k11) x5, (M1, k10) x27, (M1, k11) x5, M1, k5	38	428
Rnds 33-35	Repeat Rnds 1-3		
Rnd 36	K6, (M1, k11) x14, (M1, k12) x9, (M1, k11) x14, M1, k6	38	466
Rnds 37-39	Repeat Rnds 1-3		
Rnd 40	K6, (M1, k13) x5, (M1, k12) x27, (M1, k13) x5, M1, k6	38	504
Rnd 41	p all sts		
<p>Work in garter st until collar measures 21cm / 8.25" measured from cast-on edge.</p> <p>(if you prefer a shorter armhole depth, you can save 2-3cm / 0.75-1.25" here, but keep in mind the total length of your Misty will be shorter as well).</p>			

Size XL	Work as follows	Sts to incr.	St count
Rnd 1	p all sts		
Rnd 2	k all sts		
Rnd 3	p all sts		
Rnd 4	K2, (M1, k3) x19, (M1, k4) x2, (M1, k3) x19, M1, k2	41	167
Rnds 5-7	Repeat Rnds 1-3		
Rnd 8	K2, (M1, k4) x19, (M1, k5) x2, (M1, k4) x19, M1, k3	41	208
Rnds 9-11	Repeat Rnds 1-3		
Rnd 12	K3, (M1, k5) x19, (M1, k6) x2, (M1, k5) x19, M1, k3	41	249
Rnds 13-15	Repeat Rnds 1-3		
Rnd 16	K3, (M1, k6) x19, (M1, k7) x2, (M1, k6) x19, M1, k4	41	290
Rnds 17-19	Repeat Rnds 1-3		
Rnd 20	K4, (M1, k7) x19, (M1, k8) x2, (M1, k7) x19, M1, k4	41	331
Rnds 21-23	Repeat Rnds 1-3		
Rnd 24	K4, (M1, k8) x19, (M1, k9) x2, (M1, k8) x19, M1, k5	41	372
Rnds 25-27	Repeat Rnds 1-3		
Rnd 28	K5, (M1, k9) x19, (M1, k10) x2, (M1, k9) x19, M1, k5	41	413
Rnds 29-31	Repeat Rnds 1-3		
Rnd 32	K5, (M1, k10) x19, (M1, k11) x2, (M1, k10) x19, M1, k6	41	454
Rnds 33-35	Repeat Rnds 1-3		
Rnd 36	K6, (M1, k11) x19, (M1, k12) x2, (M1, k11) x19, M1, k6	41	495
Rnds 37-39	Repeat Rnds 1-3		
Rnd 40	K5, (M1, k11) x44, M1, k6	45	540
Rnd 41	P all sts		
<p>Work in garter st until collar measures 24cm / 9.5" measured from cast-on edge.</p> <p>(if you prefer a shorter armhole depth, you can save 2-3cm / 0.75-1.25" here, but keep in mind the total length of your Misty will be shorter as well).</p>			

